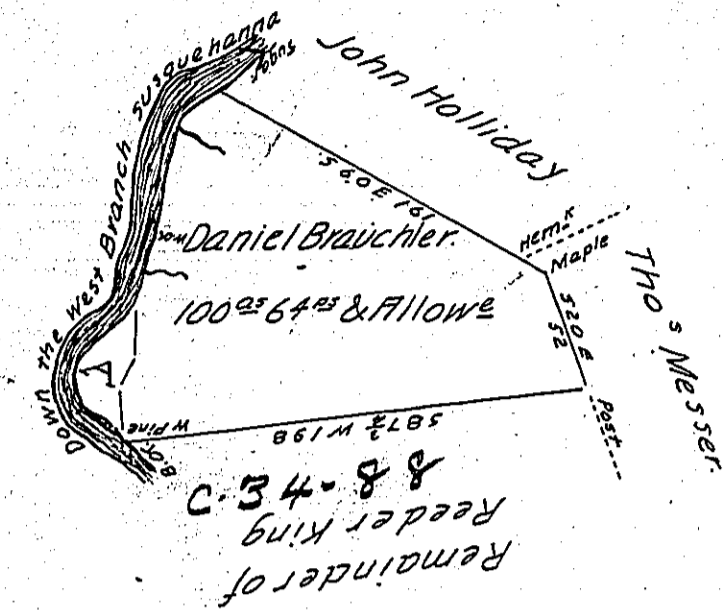


Letter A a field reserved by Reeder King.



Courses & Distance Down
 the river from B. O. to Sugar
 N. 36 W 5 to W. pine
 N 4 1/2 E 18
 N 33 E 15
 N 5 E 35
 N 27 1/2 E 13 W. O.
 N 19 E 54
 N 59 E 9 to sugar
 149 PS

Draught of a Tract of Land situate on the South Side of the West Branch of
 Susquehanna river, One and one Half Miles Below the Cherry tree in Chest
 Township Clearfield County Containing One Hundred Acres and Sixty
 four Perches and the Usual Allowance of Six per Cent for Roads &
 Surveyed the 9th Day of August 1830 For Daniel Brauchler on his Warrant
 Dated the 15th Day of April 1830 for 100 Acres.

David Ferguson D.S.

To Jacob Spangler Esq^r
 Surveyor General

Note.) This 100^{ac} 64^{ps} is part of a Survey held by Reeder King on Im-
 provement Containing 451 Acres and Sold by him to Daniel
 Brauchler.

D.F. D.S.

IN TESTIMONY that the above is a copy of the original remaining on file in
 the Department of Internal Affairs of Pennsylvania, made
 conformably to an Act of Assembly approved the 16th day of
 February, 1833, I have hereunto set my Hand and caused
 the Seal of said Department to be affixed at Harrisburg,
 this twenty-sixth day of March 1904

Francis B. Brown
 Secretary of Internal Affairs.

